



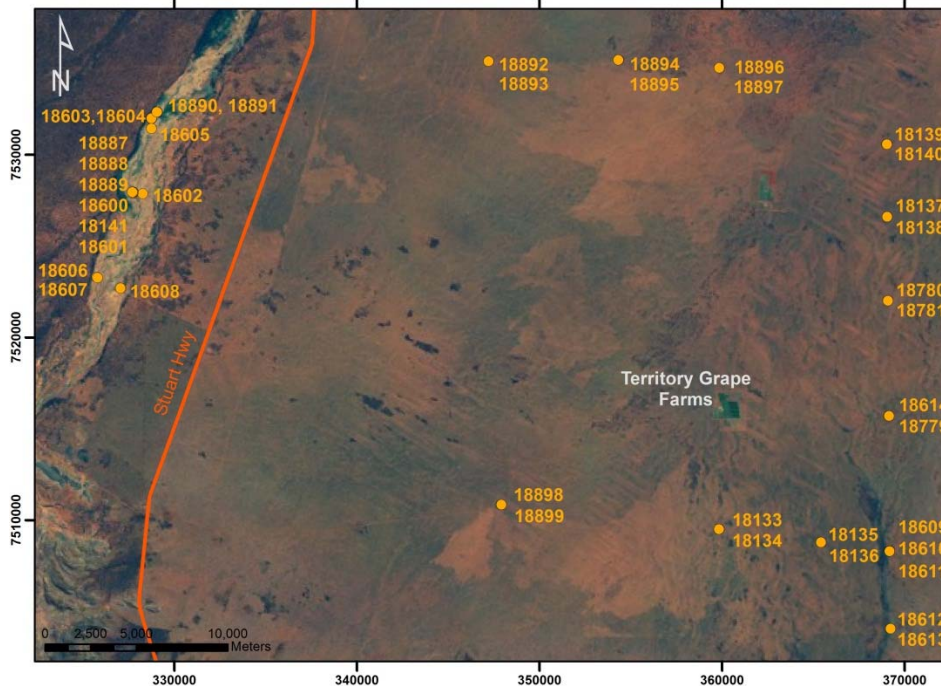
An Australian Government Initiative

Groundwater Education Investment Fund Project

Borehole Infrastructure Report

Borehole Type	Piezometer	GPS Easting	(MGA-94 Zone 53)	327739
Unique Well ID	18141	GPS Northing		7527894
Completion Date	5 December 2011	Location		Pine Hill Station, NT
Drilled By	NRETAS	Installed By		NRETAS
Monument Type	Round-White-Swing Top	Depth Drilled		6.0 m
Monument Diameter/Width	169 mm	Drilled Diameter/Method		200 mm, Rotary Air
Development Details	No airlift, dry well.			
Project Comments: 18141 is single piezometer, shallow completion. It is located adjacent to 18600 and 18601 along the Woodforde River channel, Ti Tree Basin, NT.				

Bore ID	Casing Size (mm)/ Type	TOC (mAHD)	Casing Depth (mBGL)		Screen Size (mm)/ Aperture (mm)/ Type	Cement (mBGL)		Screen Depth (mBGL)		SWL (mTOC)
	150/Steel		-0.75	3.4	NA	0.0	3.4	NA	NA	NA
18141	50/PVC9	595.444	-0.715	6	50/1/PVC	-0.5	0.0	4	5	Dry

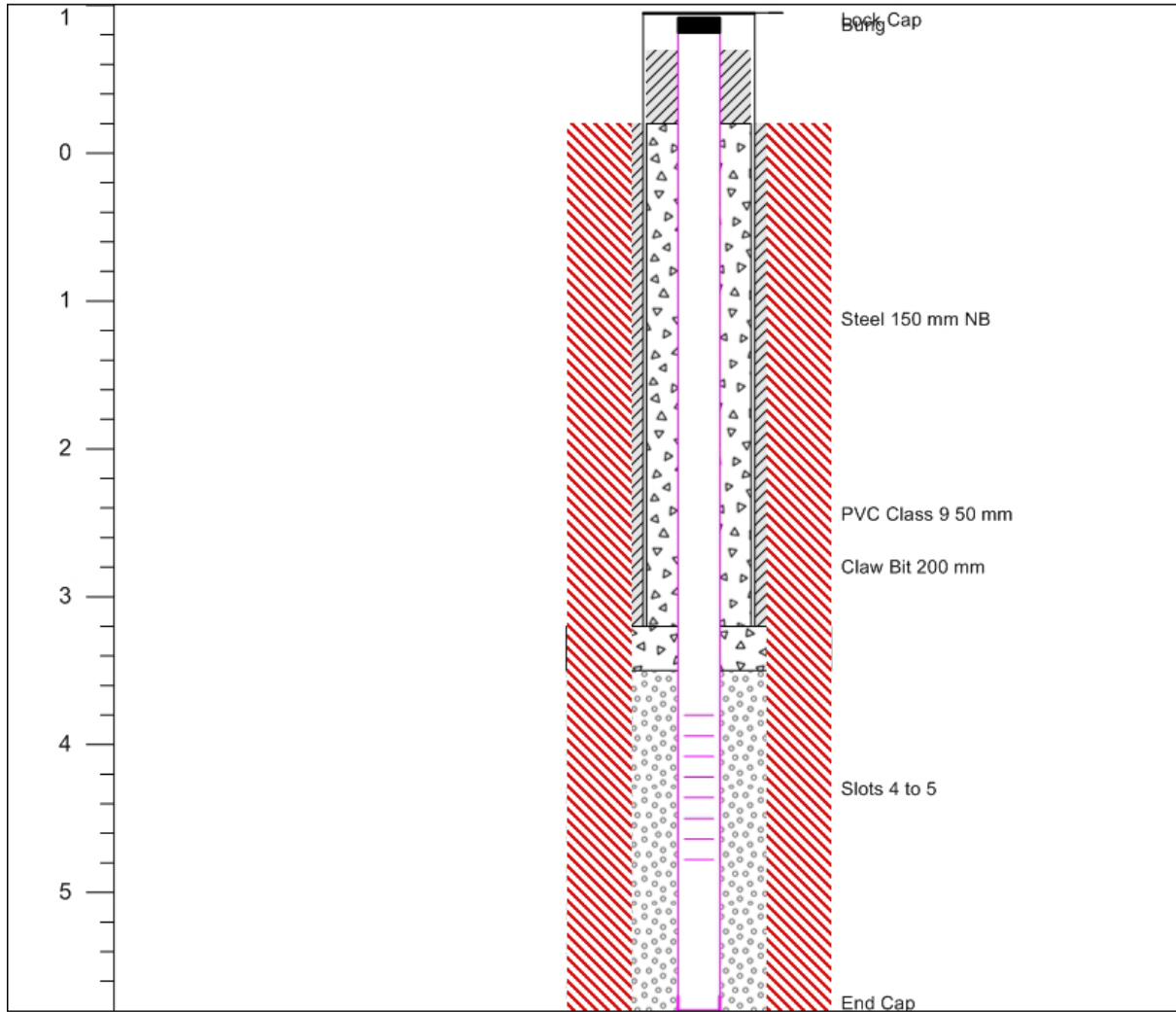


Map of Ti Tree Super Science Piezometer Locations, Pine Hill Station, NT.

Note* Appendix includes Well Completion, Lithology and Geophysical Logs, Hydraulic Test and Chemical Analysis.

Infrastructure Report prepared by:	Contact Details:	Checked by: Prof Peter Cook
	stephanie.villeneuve@flinders.edu.au Office: 08 8201 2724	

Well Completion Log



Page 1 of 1

Date Start 5/12/2011

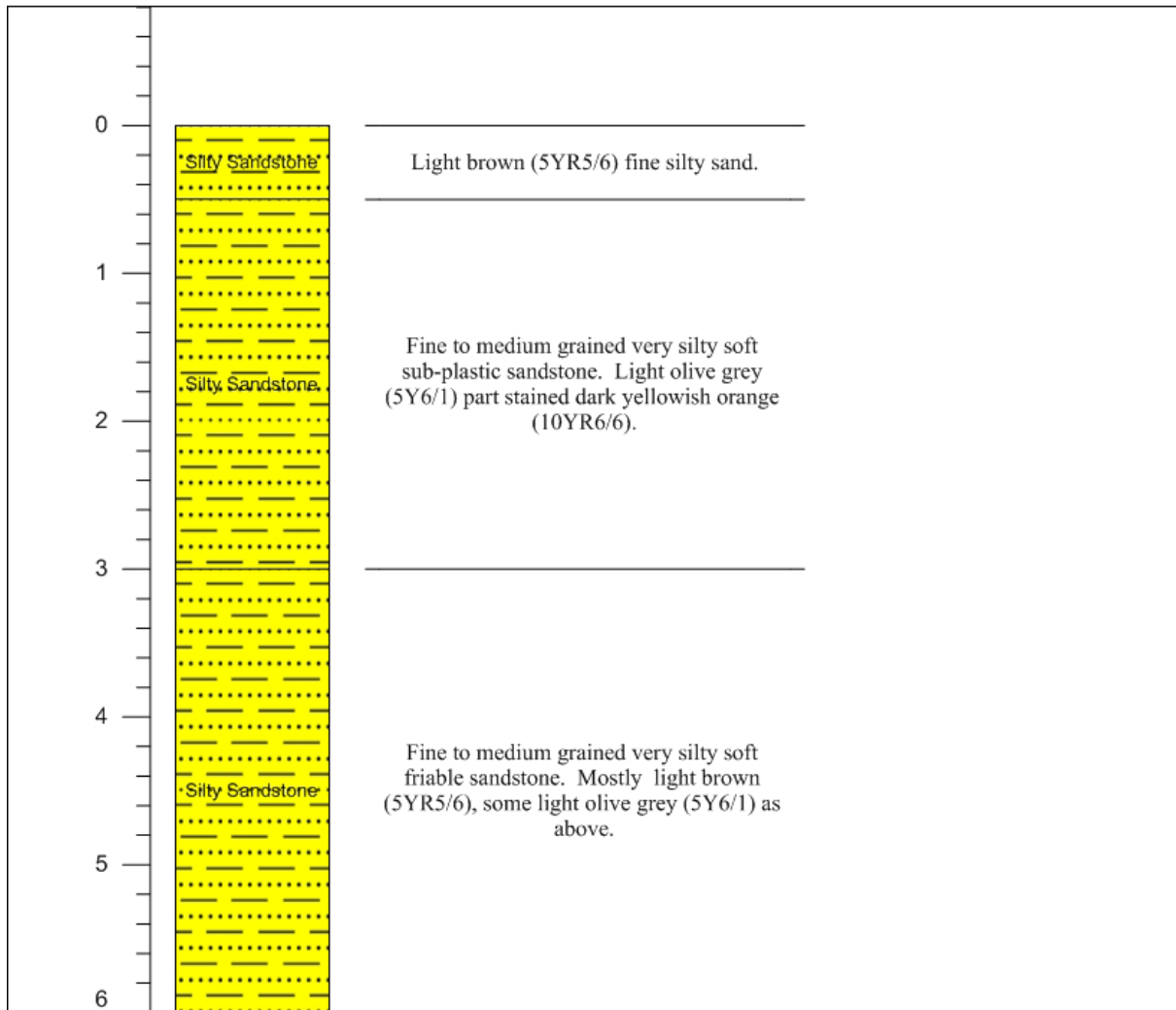
Completed 5/12/2011

Contractor

Construction Legend

Steel	Gravel Pack	Creek Sand
PVC	Lock Cap	Fall Back
□ Slots	Bung	Soil
/// Hole	End Cap	Cuttings
/// Cement	Bentonite	

Lithology Log

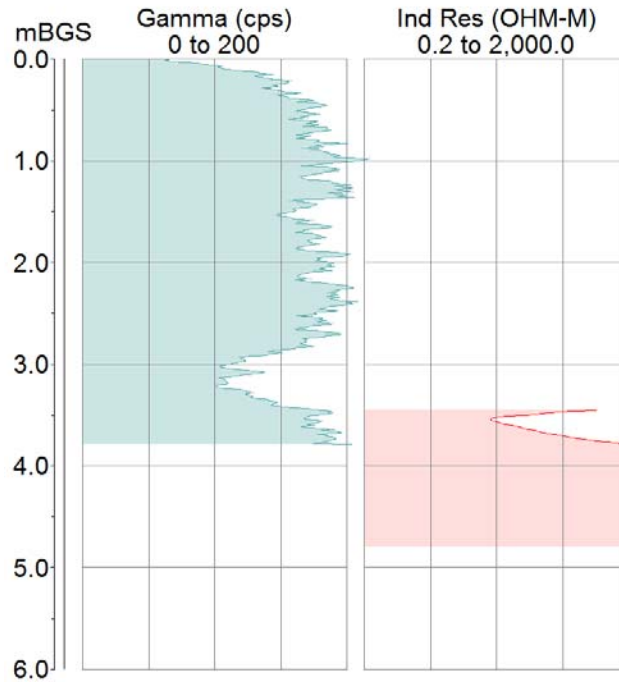


Page 1 of 1	Air Lift Yield L/s	0
Date Start 5/12/2011	Electrical Conductivity μ Siemens/cm	
Completed 5/12/2011	Standing Water Level m BGL	--
Contractor NRETAS	Status Piezometer	Depth of casing at logging m

Geophysical Logs

The portable Mount Sopris logging system was used to collect geophysical data from bore 18141. The 2PGS probe was used to collect natural gamma measurements, and the 2PIA probe was used to measure conductivity/induced resistivity.

18141



Pumping Test

This borehole is dry.

Chemical Analysis

This borehole is dry.