



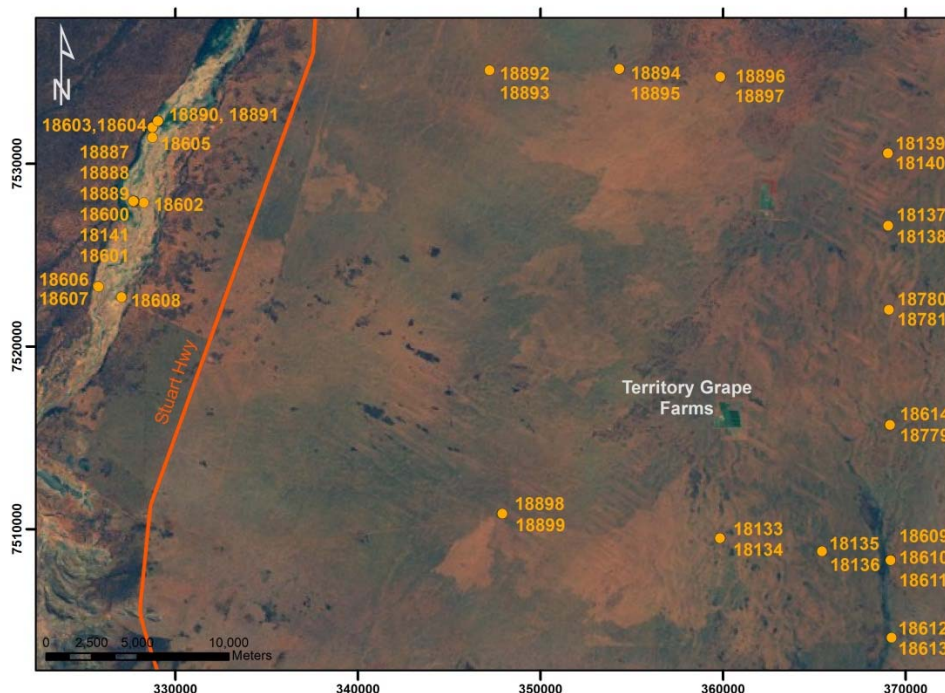
An Australian Government Initiative

Groundwater Education Investment Fund Project

Borehole Infrastructure Report

Borehole Type	Piezometer	GPS Easting	(MGA-94 Zone 53)	327747
Unique Well ID	18601	GPS Northing		7527912
Completion Date	12 May 2011	Location		Pine Hill Station, NT
Drilled By	NRETAS	Installed By		NRETAS
Monument Type	Round-White-Swing Top	Depth Drilled		9.0 m
Monument Diameter/Width	216 mm	Drilled Diameter/Method		200 mm (min), Rotary Air
Development Details	Completed in the unsaturated zone, no airlift.			
Project Comments: 18601 is located approximately 20 m from of the Woodforde River channel, Ti Tree Basin, NT.				

Bore ID	Casing Size (mm)/ Type	TOC (mAHD)	Casing Depth (mBGL)		Screen Size (mm)/ Aperture (mm)/ Type	Cement (mBGL)		Screen Depth (mBGL)		SWL (mTOC)
	200/Steel		-0.75	4.0	NA	0.0	4.0	NA	NA	NA
18601	100/PVC12	596.097	-0.7	9.0	100/1/PVC	4.0	4.62	5.0	6.0	Dry

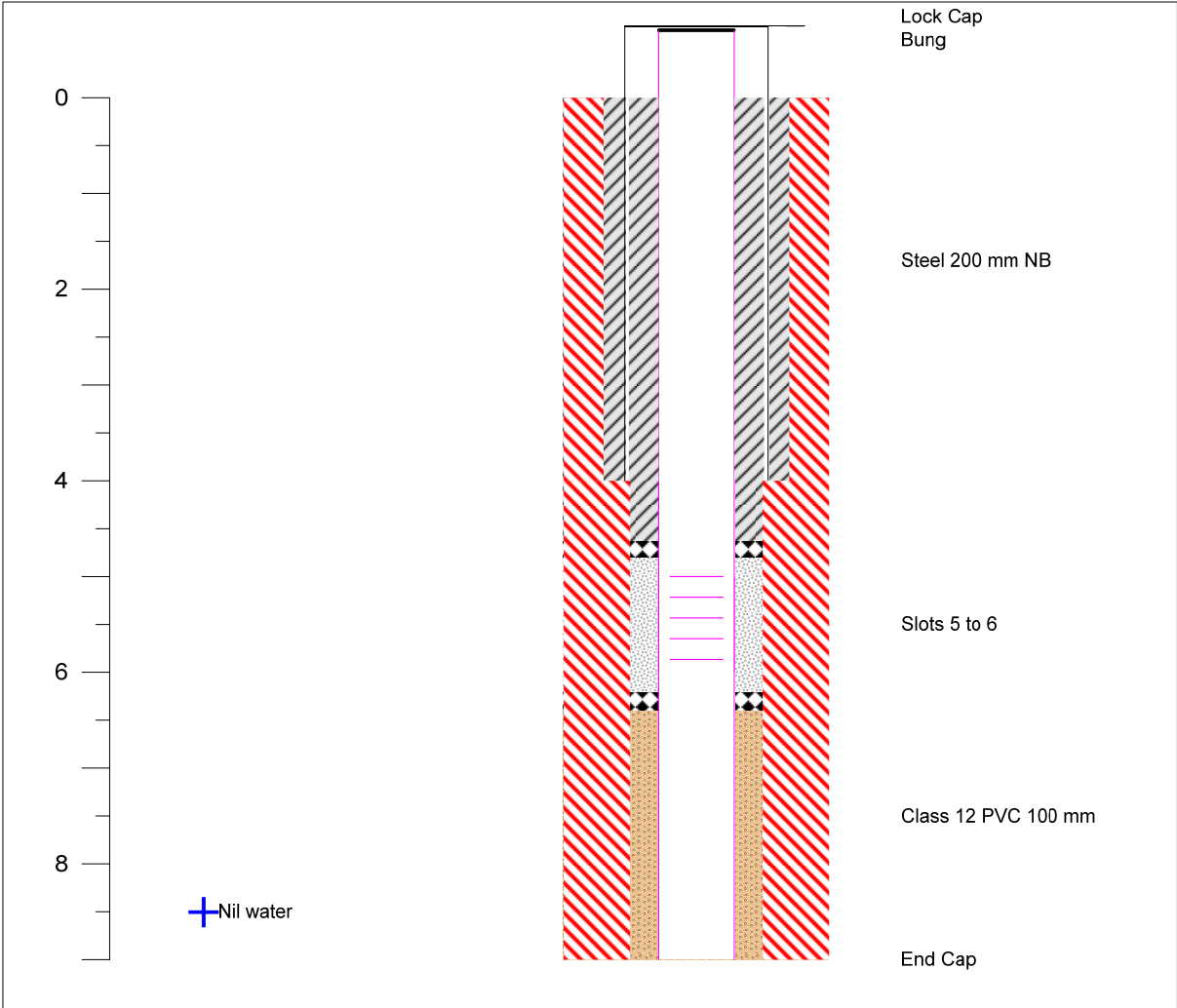


Map of Ti Tree Super Science Piezometer Locations, Pine Hill Station, NT.

Note* Appendix includes Well Completion, Lithology and Geophysical Logs, Hydraulic Test and Chemical Analysis.

Infrastructure Report prepared by:	Contact Details:	Checked by: Prof Peter Cook
	stephanie.villeneuve@flinders.edu.au Office: 08 8201 2724	

Well Completion Log



Page 1 of 1

Date Start 11/05/2011

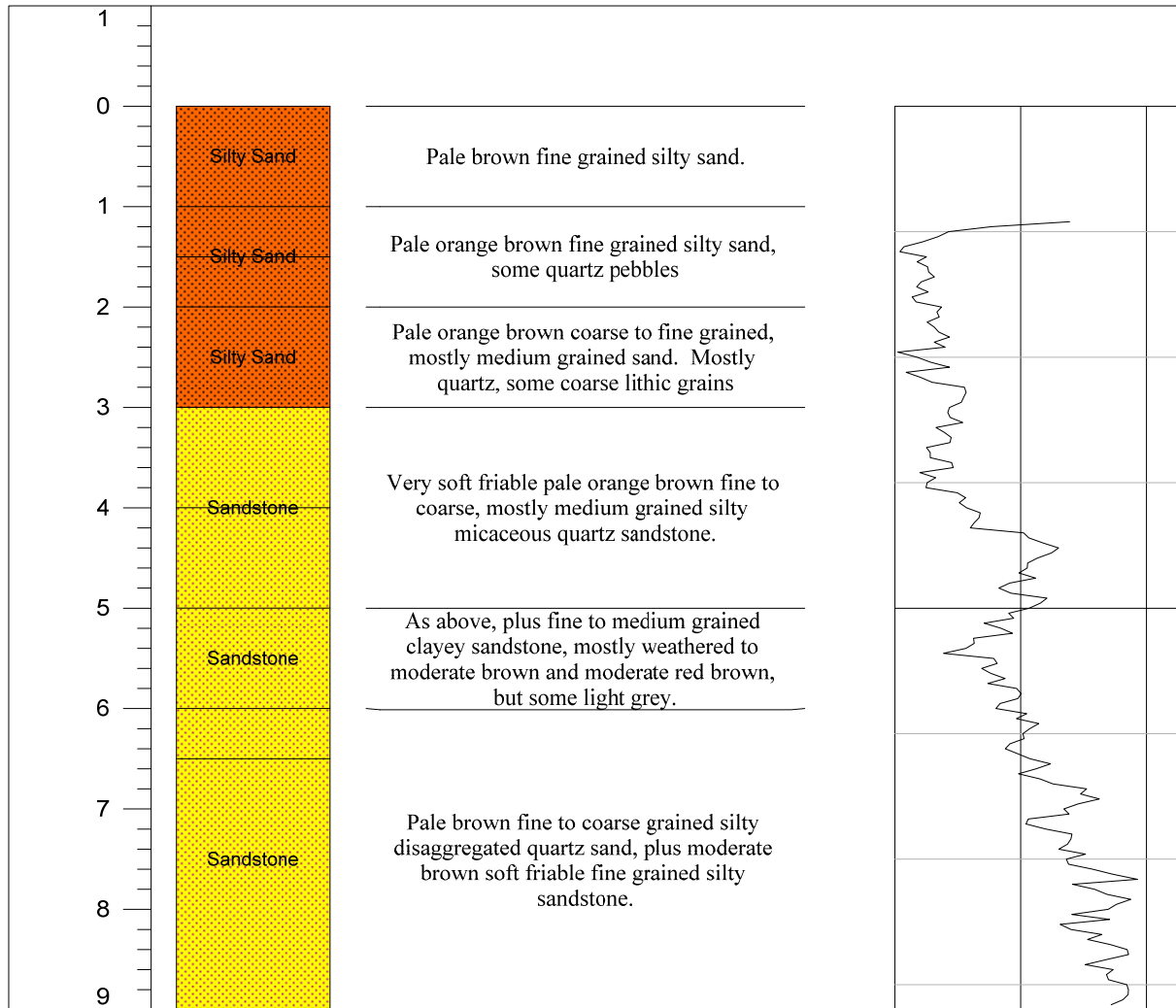
Completed 12/05/2011

Contractor NRETAS

Construction Legend

Steel	Cement	End Cap
PVC	Gravel Pack	Bentonite
Slots	Lock Cap	Creek Sand
Hole	Bung	

Lithology Log



Page 1 of 1

Air Lift Yield L/s

0

Date Start 11/05/2011 Electrical Conductivity μ Siemens/cm

-

Completed 12/05/2011 Standing Water Level m BGL

-

Contractor NRETAS

Status Piezometer

60

110

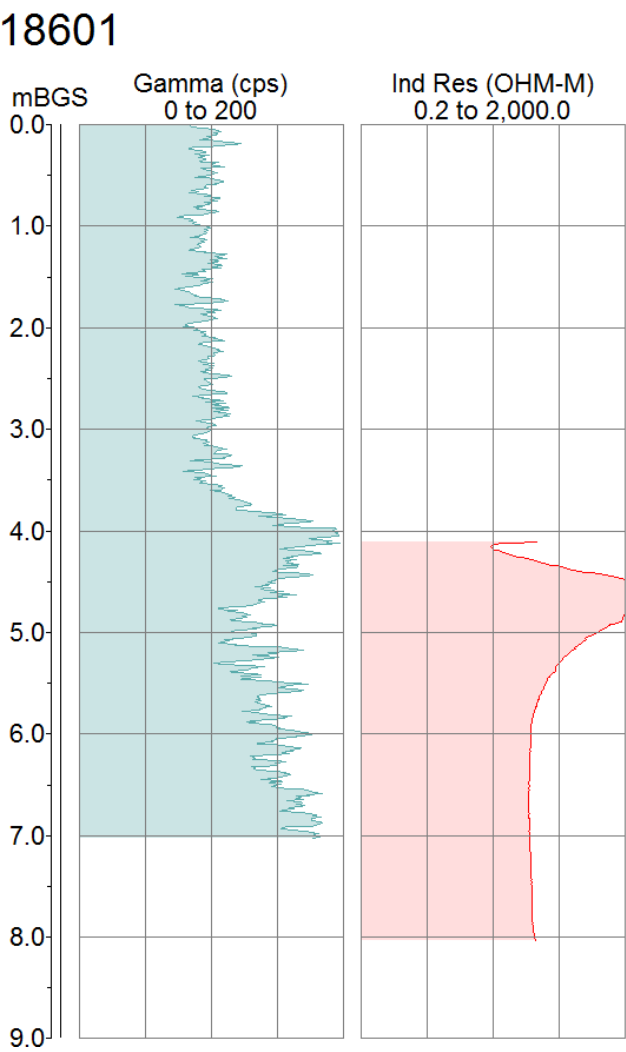
160

Gamma cps

Depth of casing at logging 4 m

Geophysical Logs

The portable Mount Sopris logging system was used to collect geophysical data from bore 18601. The 2PGS probe was used to collect natural gamma measurements, and the 2PIA probe was used to measure conductivity/induced resistivity.



Pumping Test

Piezometer 18601 is completed in the unsaturated zone in order to test for an ephemeral perched aquifer. It has been dry during each visit to date.

Chemical Analysis

Piezometer 18601 is completed in the unsaturated zone in order to test for an ephemeral perched aquifer. It has been dry during each visit to date.