



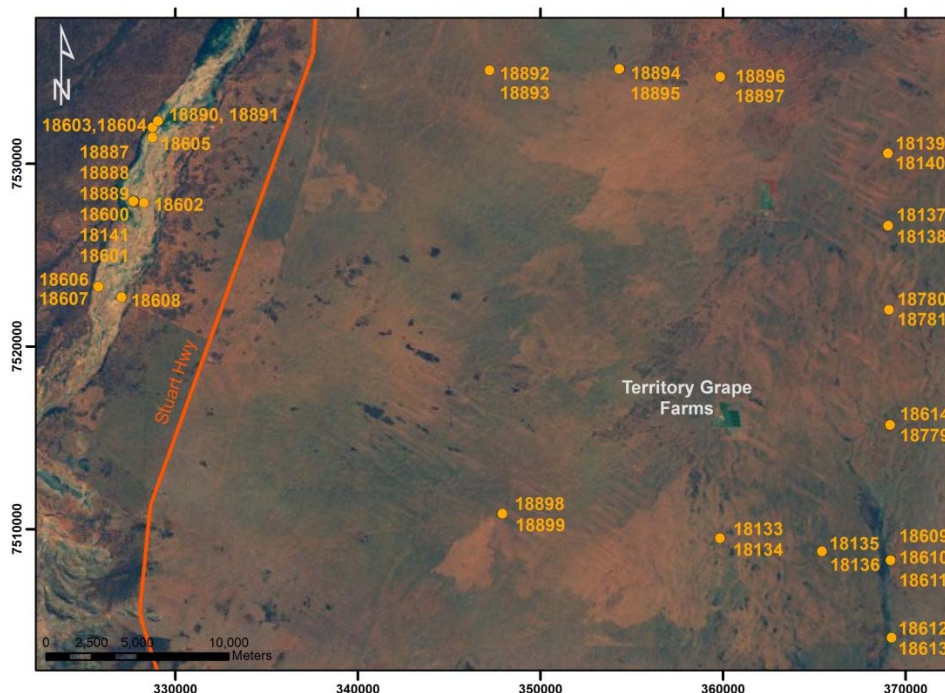
An Australian Government Initiative

# Groundwater Education Investment Fund Project

## Borehole Infrastructure Report

Borehole Type	Piezometer	GPS Easting	(MGA-94 Zone 53)	328737
Unique Well ID	18604	GPS Northing		7531993
Completion Date	16 May 2011	Location		Pine Hill Station, NT
Drilled By	NRETAS	Installed By		NRETAS
Monument Type	Round-White-Swing Top	Depth Drilled		2.4 m
Monument Diameter/Width	169 mm	Drilled Diameter/Method		200 mm, Air Jetted
Development Details	No water evident while drilling.			
Project Comments: 18604 is a shallow piezometer, located in the Woodforde River channel, Ti Tree Basin, NT.				

Bore ID	Casing Size (mm)/ Type	TOC (mAHD)	Casing Depth (mBGL)		Screen Size (mm)/ Aperture (mm)/ Type	Cement (mBGL)		Screen Depth (mBGL)		SWL (mTOC)
	150/Steel		-0.9	1.2	NA	0.0	0.9	NA	NA	NA
18604	100/PVC12	588.565	-0.79	2.4	100/1/PVC	-0.72	1.2	1.6	2.1	Dry

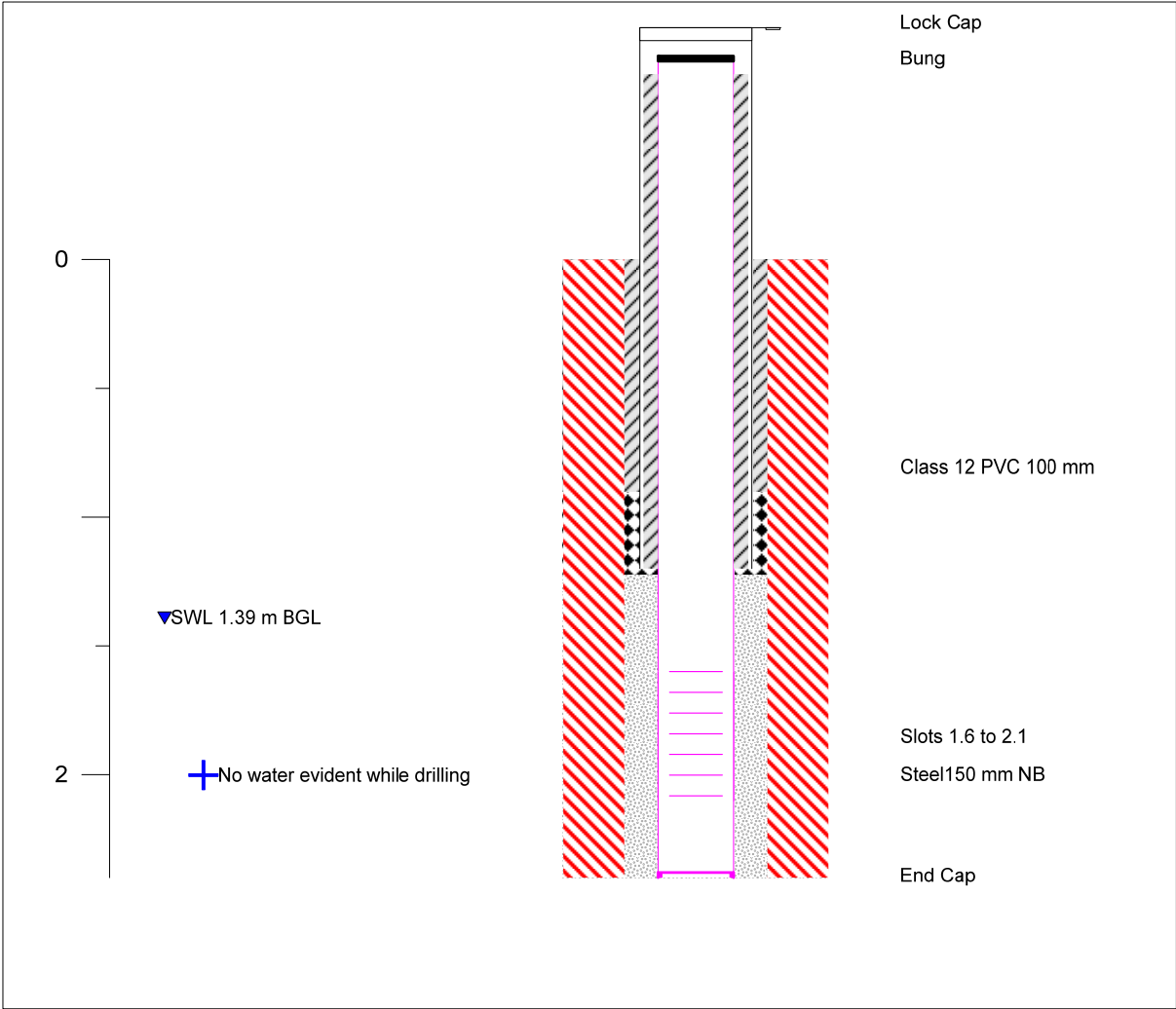


Map of Ti Tree Super Science Piezometer Locations, Pine Hill Station, NT.

Note\* Appendix includes Well Completion, Lithology and Geophysical Logs, Hydraulic Test and Chemical Analysis.

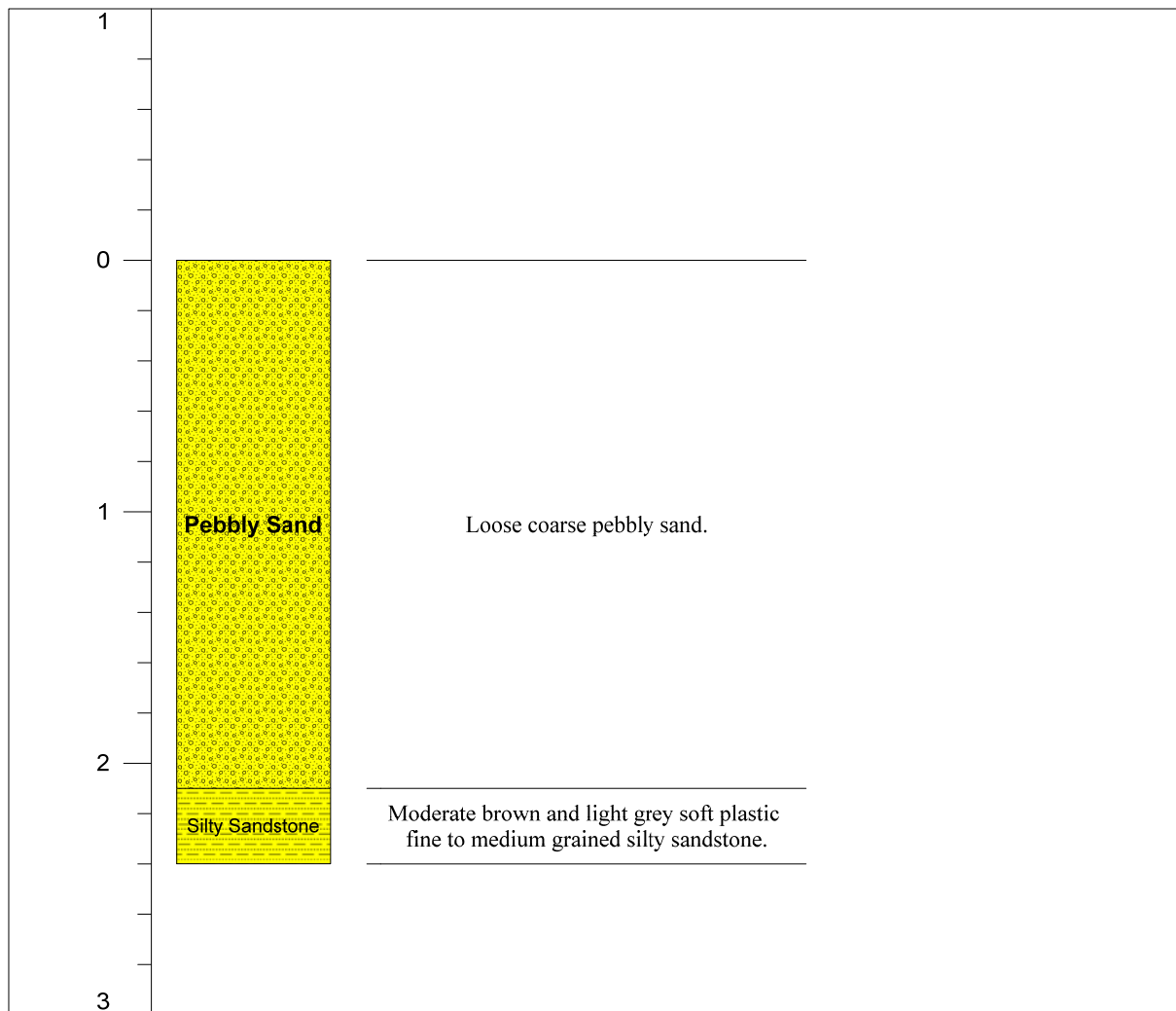
Infrastructure Report prepared by:	Contact Details:	Checked by: Prof Peter Cook
	<a href="mailto:stephanie.villeneuve@flinders.edu.au">stephanie.villeneuve@flinders.edu.au</a> Office: 08 8201 2724	

# Well Completion Log



Page 1 of 1		Construction Legend		
Date Start	16/05/2011	Steel	Cement	End Cap
Completed	16/05/2011	PVC	Gravel Pack	Bentonite
Contractor	NRETAS	Slots	Lock Cap	Creek Sand
		Hole	Bung	

# Lithology Log



Page 1 of 1	Air Lift Yield L/s	0	
Date Start 16/05/2011	Electrical Conductivity $\mu$ Siemens/cm		
Completed 16/05/2011	Standing Water Level m BGL	1.39	
Contractor NRETAS	Status Piezometer		Depth of casing at logging m

# Geophysical Log

This borehole is too shallow for geophysical tools.

# Pumping Test

This borehole is dry.

# Chemical Analysis

This borehole is dry.