



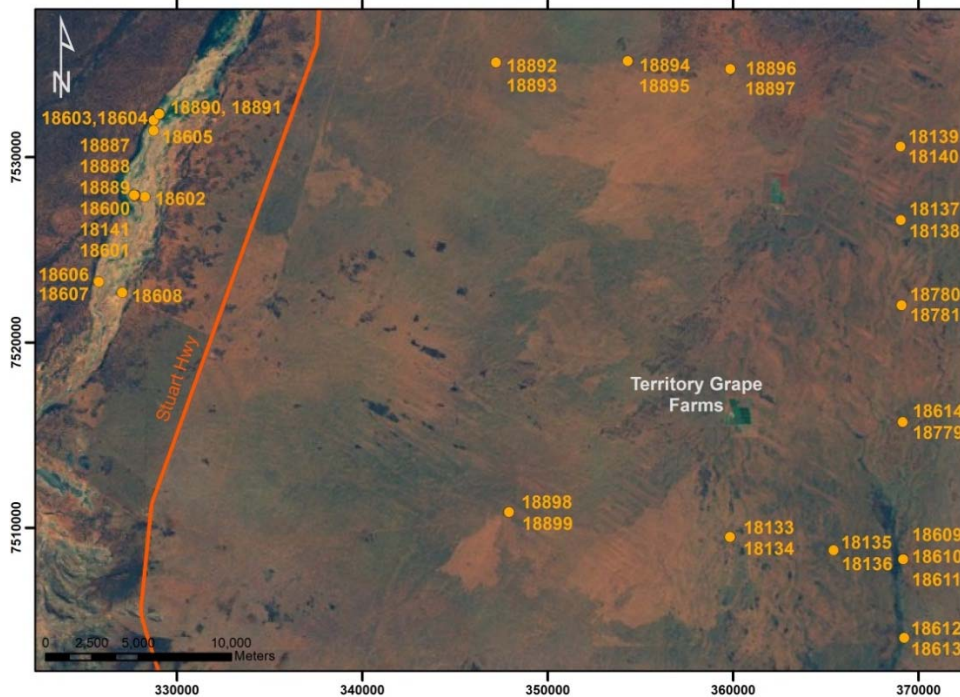
An Australian Government Initiative

Groundwater Education Investment Fund Project

Borehole Infrastructure Report

Borehole Type	Piezometer	GPS Easting	(MGA-94 Zone 53)	327739
Unique Well ID	18887	GPS Northing		7527956
Completion Date	6 June 2012	Location		Pine Hill Station, NT
Drilled By	NRETAS	Installed By		NRETAS
Monument Type	Round-Swing Top	Depth Drilled		10.2 m
Monument Diameter/Width	216 mm	Drilled Diameter/Method		200 mm (min), Rotary Air
Development Details	No airlift.			
Project Comments: 18887 is a single completion piezometer which together with 18888 and 18889 form a transect adjacent to the Woodford River, Ti Tree, NT.				

Bore ID	Casing Size (mm)/ Type	TOC (mAHD)	Casing Depth (mBGL)		Screen Size (mm)/ Aperture (mm)/ Type	Cement (mBGL)		Screen Depth (mBGL)		SWL (mTOC)
	200/Steel		-1.0	5.0	NA	0.0	5.0	NA	NA	NA
18887	50/PVC12	596.227	-0.935	10.2	50/0.5/UPVC18	-0.85	5.0	8.0	9.0	Dry

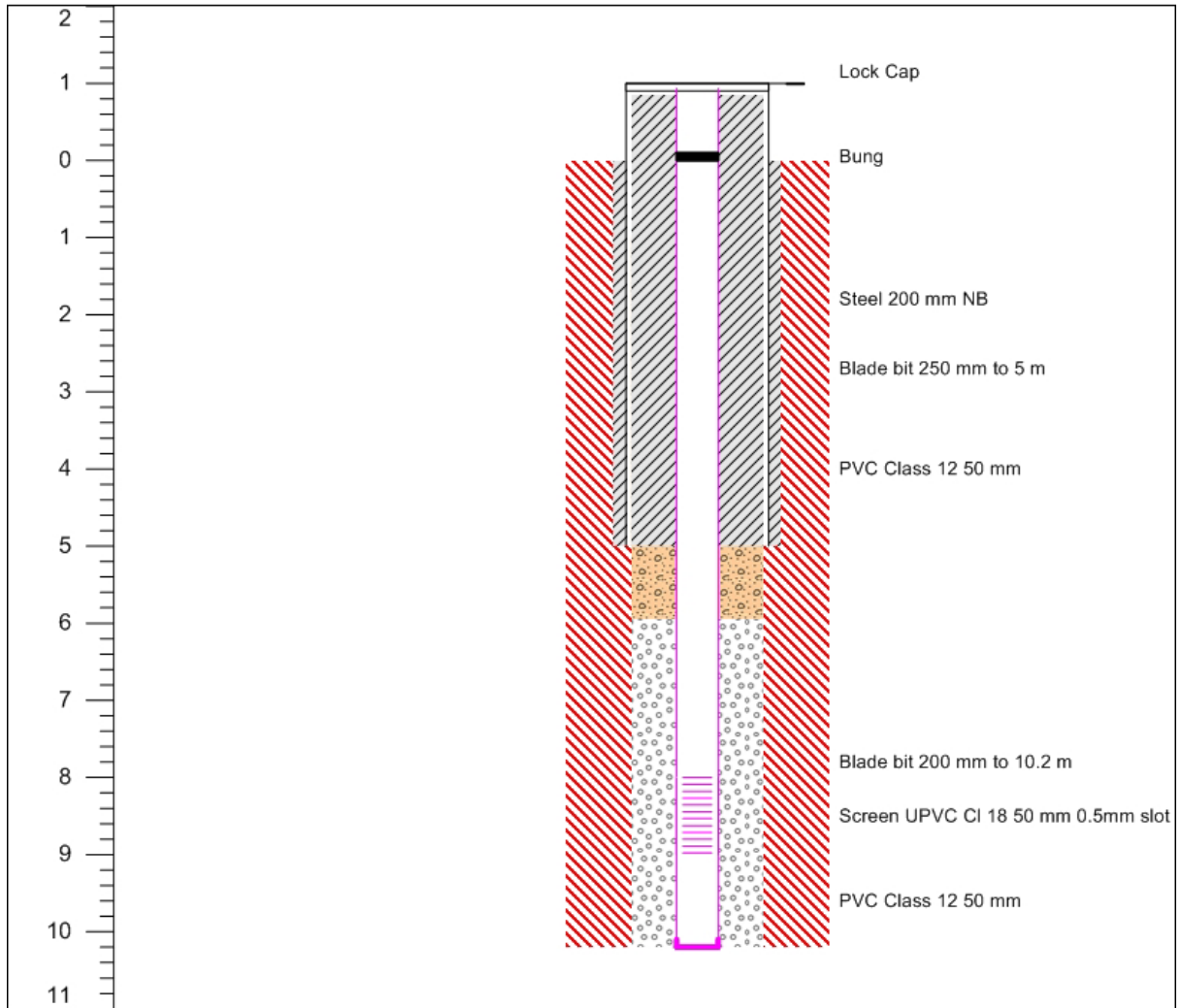


Map of Ti Tree Super Science Piezometer Locations, Pine Hill Station, NT.

Note* Appendix includes Well Completion, Lithology and Geophysical Logs, Hydraulic Test and Chemical Analysis.

Infrastructure Report prepared by:	Contact Details:	Checked by:
	stephanie.villeneuve@flinders.edu.au Office: 08 8201 2724	Prof Peter Cook

Well Completion Log



Page 1 of 1

Date Start 4/06/2012

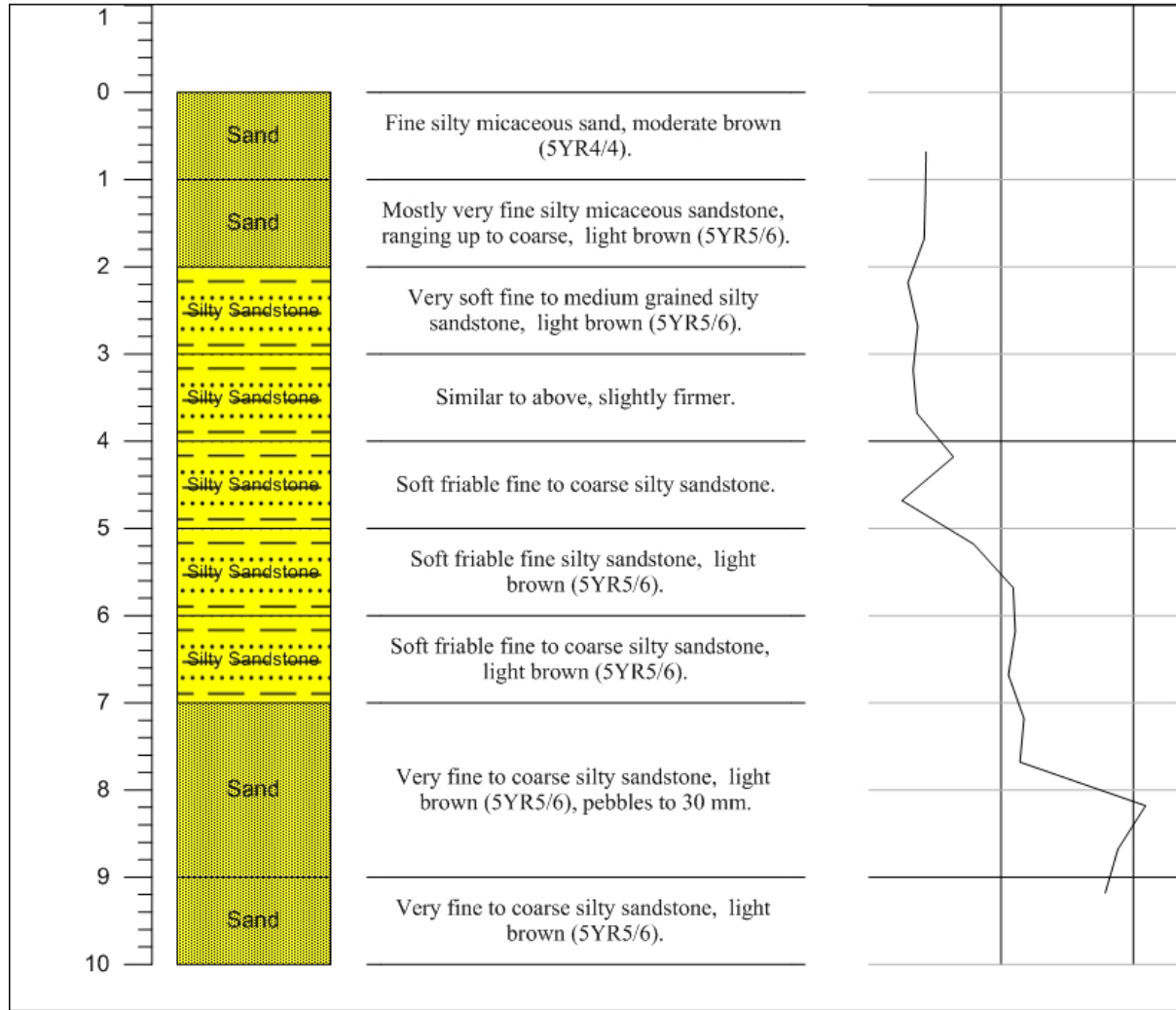
Completed 6/06/2012

Contractor NRETAS

Construction Legend

	Steel		Gravel Pack		Creek Sand
	PVC		Lock Cap		Fall Back
	Slots		Bung		Soil
	Hole		End Cap		Cuttings
	Cement		Bentonite		Screen

Lithology Log



Page 1 of 1

Air Lift Yield L/s Nil

Date Start 4/06/2012 Electrical Conductivity μ Siemens/cm

Completed 6/06/2012 Standing Water Level m BGL

Contractor NRETAS

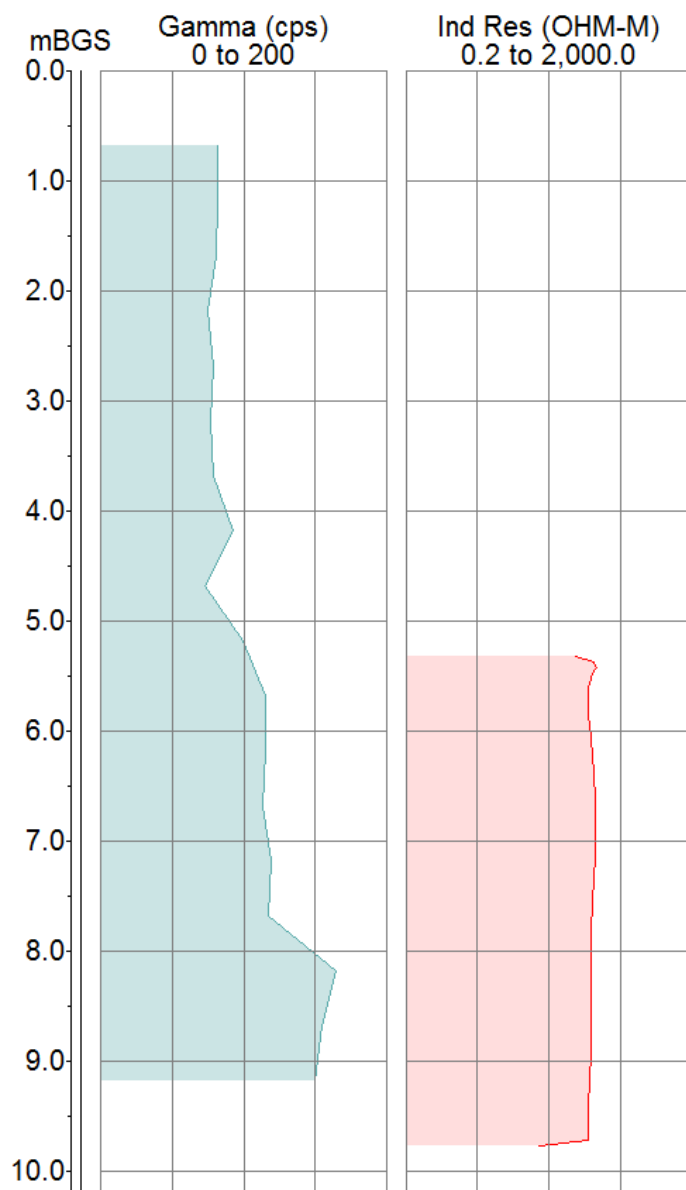
Status Piezometer

Gamma cps
Depth of casing at logging 5 m

Geophysical Logs

Geophysical data for bore 18887 was collected by NRETAS and included natural gamma and induced resistivity measurements.

18887



Pumping Test

This well is dry.

Chemical Analysis

This well is dry.