



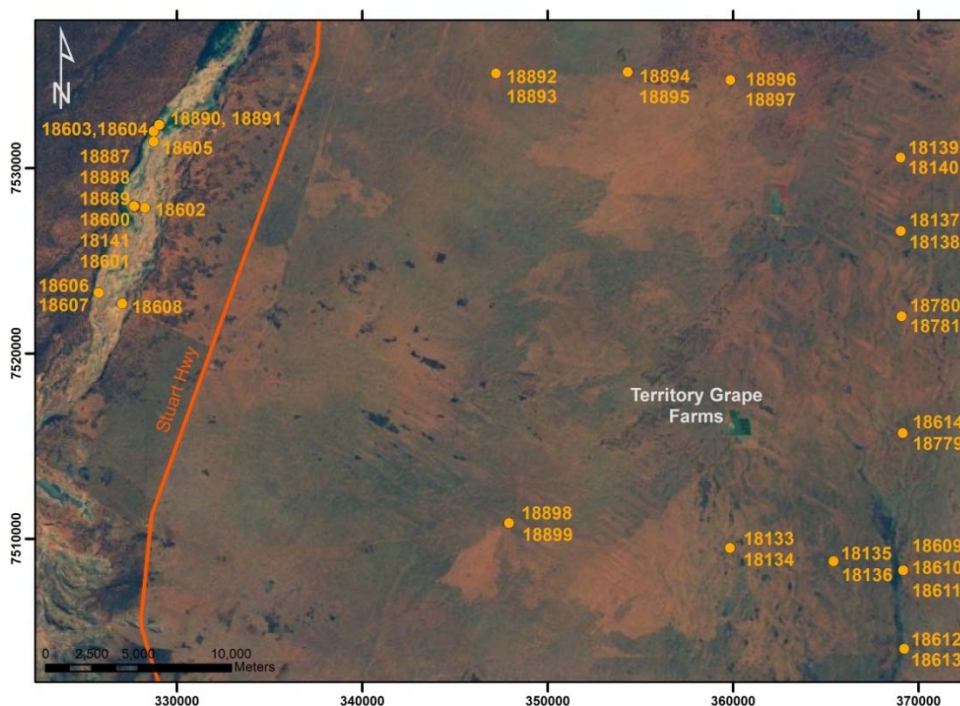
An Australian Government Initiative

Groundwater Education Investment Fund Project

Borehole Infrastructure Report

Borehole Type	Piezometer	GPS Easting	(MGA-94 Zone 53)	329061
Unique Well ID	18890	GPS Northing		7532341
Completion Date	21 June 2012	Location		Pine Hill Station, NT
Drilled By	NRETAS	Installed By		NRETAS
Monument Type	Round-Swing Top	Depth Drilled		11.7 m
Monument Diameter/Width	216 mm	Drilled Diameter/Method		200 mm (min), Rotary Air
Development Details	No airlift.			
Project Comments: 18890 is a single completion piezometer adjacent to the Woodford River, Ti Tree, NT.				

Bore ID	Casing Size (mm)/ Type	TOC (mAHD)	Casing Depth (mBGL)		Screen Size (mm)/ Aperture (mm)/ Type	Cement (mBGL)		Screen Depth (mBGL)		SWL (mTOC)
	200/Steel		-1.0	4.0	NA	0.0	4.0	NA	NA	NA
18890	50/PVC12	589.078	-0.86	10.5	50/0.5/UPVC18	0.0	3.9	8.5	9.5	Dry

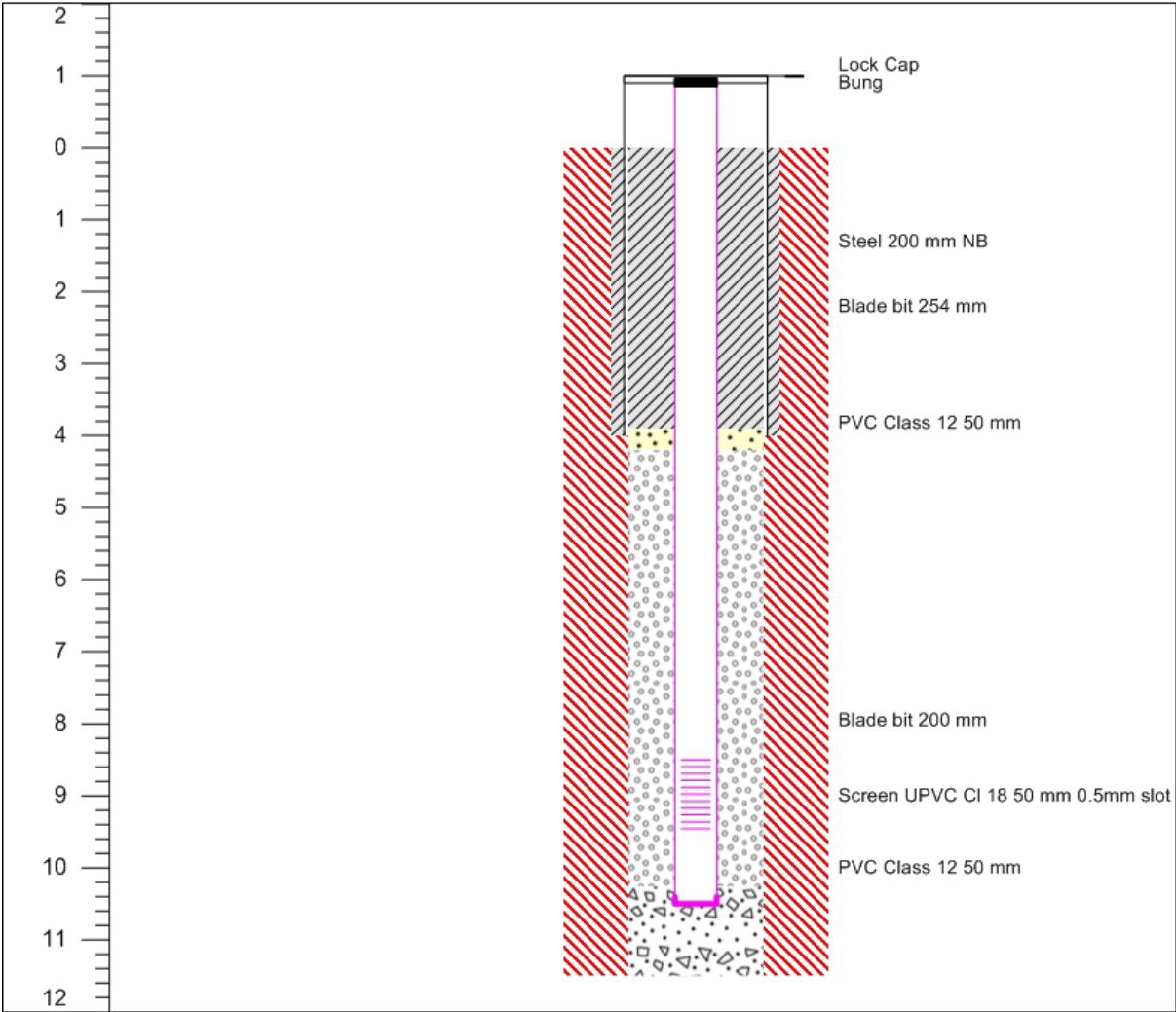


Map of Ti Tree Super Science Piezometer Locations, Pine Hill Station, NT.

Note* Appendix includes Well Completion, Lithology and Geophysical Logs, Hydraulic Test and Chemical Analysis.

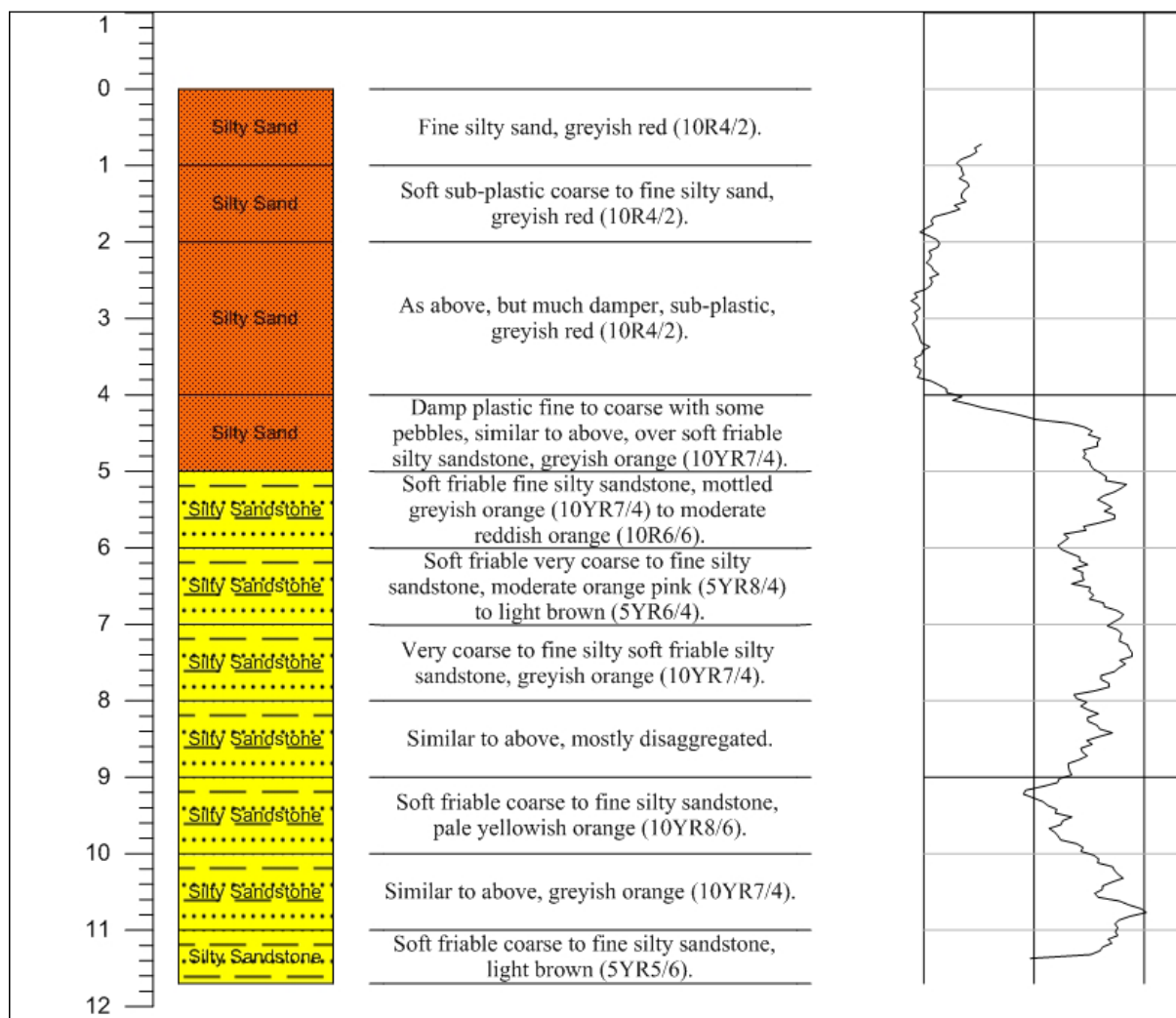
Infrastructure Report prepared by:	Contact Details:	Checked by:
	stephanie.villeneuve@flinders.edu.au Office: 08 8201 2724	Prof Peter Cook 

Well Completion Log



Page 1 of 1		Construction Legend	
Date Start 19/06/2012	Steel	Gravel Pack	Creek Sand
Completed 21/06/2012	PVC	Lock Cap	Fall Back
Contractor NRETAS	Slots	Bung	Soil
	Hole	End Cap	Cuttings
	Cement	Bentonite	Screen

Lithology Log



Page 1 of 1

Air Lift Yield L/s

Nil

Date Start 19/06/2012 Electrical Conductivity μ Siemens/cm no sample

Completed 21/06/2012

Standing Water Level m BGL

--

Contractor NRETAS

Status

Piezometer

80 110 160

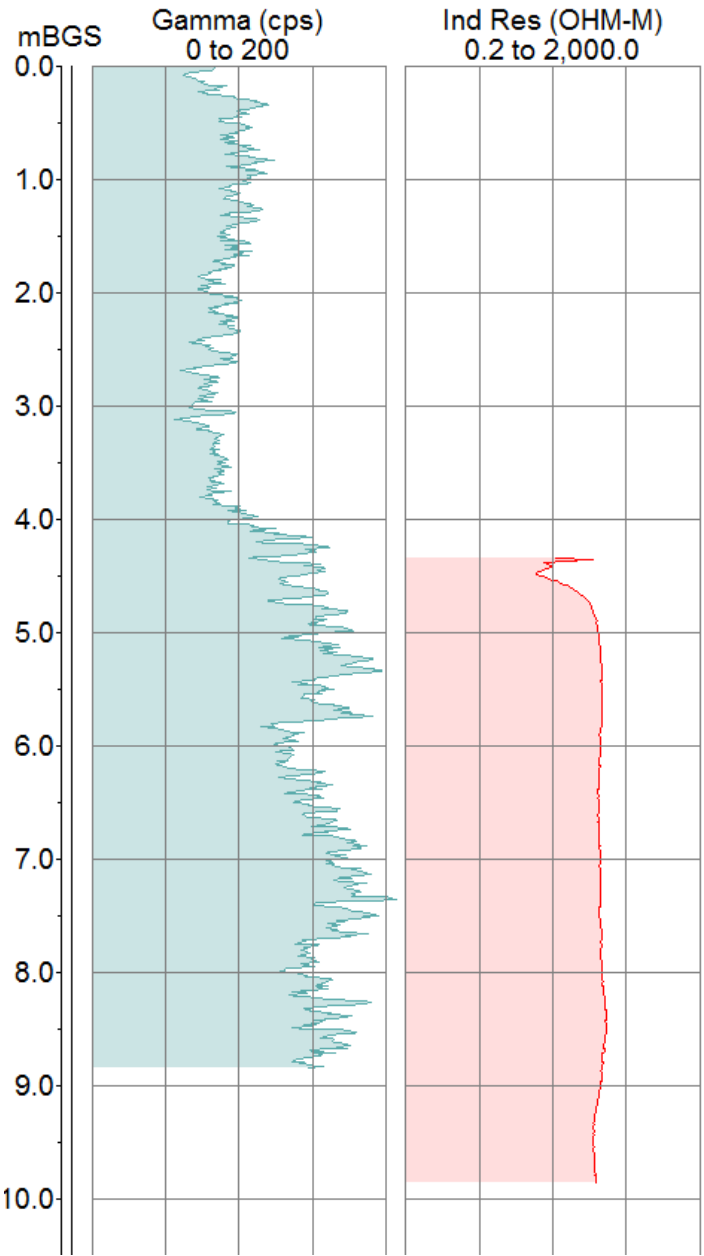
Gamma cps

Depth of casing at logging 4 m

Geophysical Logs

The portable Mount Sopris logging system was used to collect geophysical data from bore 18890. The 2PGS probe was used to collect natural gamma measurements, and the 2PIA probe was used to measure conductivity/induced resistivity.

18890



Pumping Test

This borehole is dry.

Chemical Analysis

This borehole is dry.