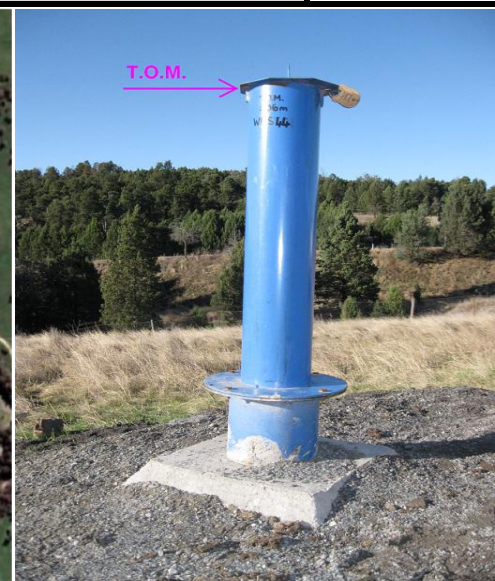
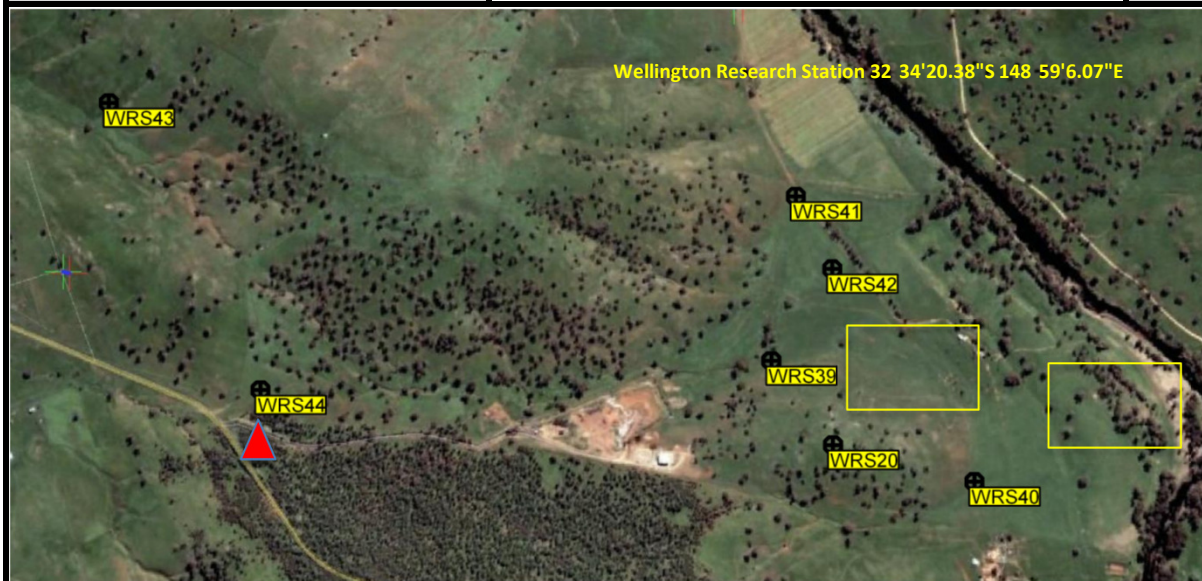




Groundwater Education Investment Fund Project Borehole Infrastructure Report


An Australian Government Initiative

Funding	SuperScience	Project	RM07768
Borehole Type	Monitoring Bore	Location	Wellington Research Station
Unique Well ID	WRS44 (GW273252)	Installed By	NSW Office of Water
Completion Date	24.02.2012	Depth Installed [m]	NA
Drilled By	NSW Office of Water	Depth Drilled [m]	106
Monument Type	Round Blue Swing Top	Drilled Diameter/Method	172mm/Rotary Hammer
Monument Diameter/Width [mm]	170	Screen Depth [m]	NA
Top of Monument from GL [m]	1.06	Screen Type	NA
PVC Casing to TOM [mm]	NA	Level of Bentonite [m]	NA
Elevation (AHD71)	373.793	Casing Size/Type	NA
Easting	684531.609	SWL After Development [m]	95.4
Northing	6394245.624	Development Details	Not developed




Comments

This borehole is situated West of the upper groundwater investigation site, and is located outside the zone of influence from the extraction well.

Infrastructure Report Prepared By:
Mr. Samuel McCulloch


Contact Details:
 Email: s.mcculloch@wrl.unsw.edu.au
 Ph: 02 807 19871

Checked by:
Prof. Ian Acworth


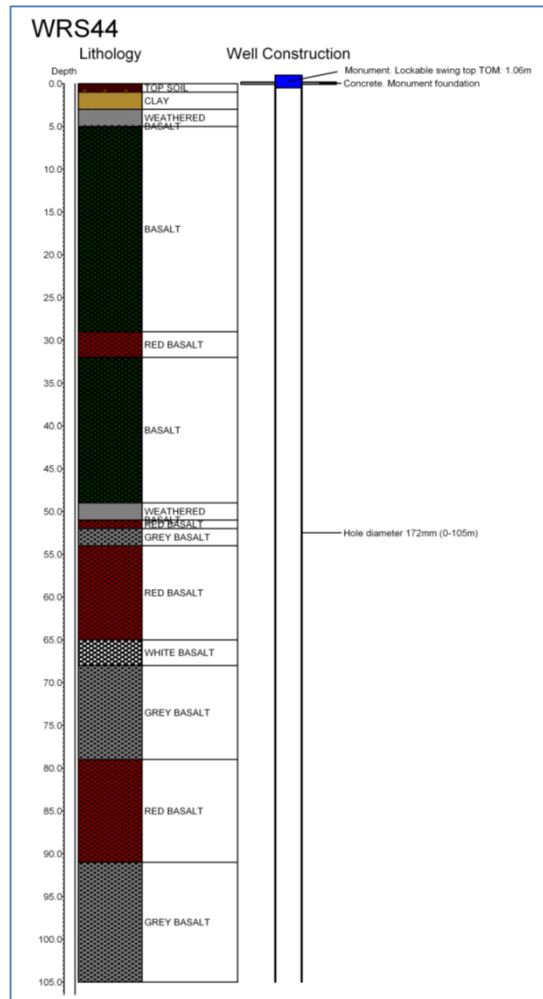


Groundwater Education Investment Fund Project Borehole Infrastructure Report

An Australian Government Initiative

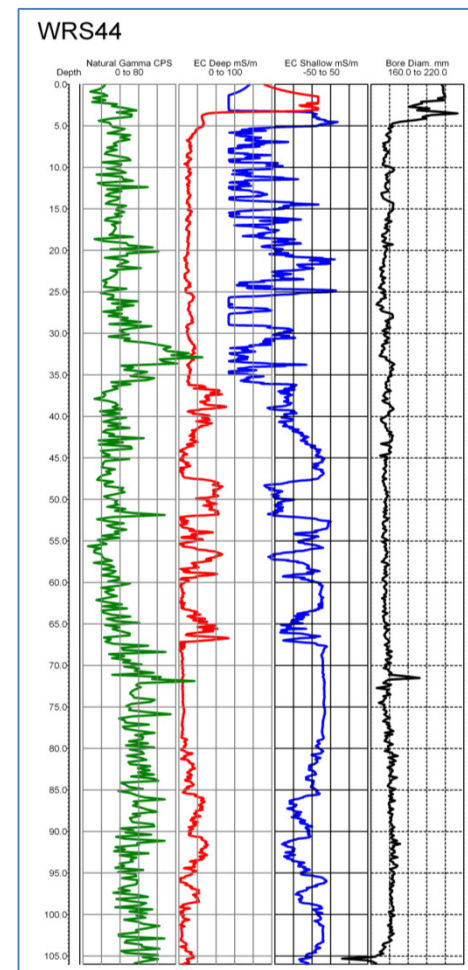
Stratigraphic Bore Log

Samples of the drill cuttings were obtained during drilling of the borehole and stored for future reference. Standard borehole information is documented in the bore log below.



Geophysics Log

The portable Geovista logging system was used to collect geophysical data from 105m to surface. The Electrical Conductivity sonde (DILS) is used to obtain quantitative information on dissolved salts and apparent bulk conductivity information. The natural gamma sonde (NGRS) is predominantly used for qualitative evaluations of stratigraphic characteristics, argillaceous sediments and clay minerals.





An Australian Government Initiative

Groundwater Education Investment Fund Project Borehole Infrastructure Report

Slug Test

A standard slug test has not been performed on this monitoring bore. Future field work that incorporates fundamentals of the slug test on open boreholes has been planned.

Groundwater Quality

Basic chemical analysis of the dissolved solutes and concentration of ions in the borehole has not yet been completed. Future testing has been planned and will also include hydrogen ion activity (pH) and fluid electrical conductivity (EC). Data from the chemical analysis is to be displayed in the table below.

Date	0/01/1900		Ca²⁺	0.00	[mg/L]
Time	0:00		K⁺	0.00	[mg/L]
SWL	0.00	[m]	Mg²⁺	0.00	[mg/L]
Field pH	0.0		Na⁺	0.00	[mg/L]
EC	0	[μS/cm]	Si	0.00	[mg/L]
Temp	0.0	[°C]	Cl⁻	0.00	[mg/L]
Alkalinity	0.00	[meq/L]	NO₃⁻	0.00	[mg/L]
O₂	0.00	[mg/L]	SO₄²⁻	0.00	[mg/L]

